

Silver Sport 2 Wheelchair

HCPCS: K0001 / K0002-1, K0001 OR K0002

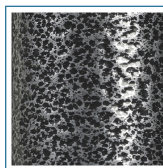


FIGURE A



FIGURE B

- Powder-coated silver vein steel frame (Figure A)
- Embossed vinyl upholstery is durable, lightweight, attractive and easy-to-clean
- Urethane tires mounted on composite wheels provide durability and low maintenance
- 8" front casters, adjustable in three positions
- Padded armrests provide additional comfort
- Carry pocket on backrest provides additional convenience
- Comes with swing-away footrests or elevating leg rests with tool-free adjustable length riggings
- Plastic foot plates with heel loops on footrests
- Comes with push-to-lock wheel locks

PRODUCTS

Description

| | |
|---------------|------------------------------------------|
| SSP216DDA-ELR | SlvrSprt2,16"SlvrVeinDetDsk,ElvLg,1/cs |
| SSP216DDA-SF | SlvrSprt2,16in SlvrVeinDetDsk,SwgFt,1/cs |
| SSP216DFA-ELR | SlvrSprt2,16"SlvrVeinDetFullArm,ELV,1/ea |
| SSP216DFA-SF | SlvrSprt2,16",DetFullArm,SwgFt,1/ea |
| SSP218DDA-ELR | SlvrSprt2,18"SlvrVeinDetDskArm,ElvLg1/cs |
| SSP218DDA-SF | SlvrSprt2,18inSvrVeinDetDsk,SwgFt,1/cs |
| SSP218DFA-ELR | SlvrSprt2,18"SlvrVeinDetFullArm,ELV,1/cs |
| SSP218DFA-SF | SlvrSprt2,18",DetFullArm,SwgFt,1/ea |
| SSP218FA-ELR | SlvrSprt2,18"SlvrVeinFxdArm,ElvLg,1/cs |
| SSP218FA-SF | SlvrSprt2,18 SlvrVeinFxdArm.SwgFt,1/cs |
| SSP220DDA-ELR | SlvrSprt2,20""SlvrVeinDetDsk,ElvLg,1/cs |
| SSP220DDA-SF | SlvrSprt2,20in SlvrVeinDetDsk,SwgFt,1/c |
| SSP220DFA-ELR | SlvrSprt2,20"SlvrVein,FullAmr,ElvLg,1/ea |
| SSP220DFA-SF | SlvrSprt2,20",DetFullArm,SwgFt,1/ea |

SPECIFICATIONS

Description

| | |
|-----------------------------|--------------------------|
| Back Height | 16" |
| Carton Shipping Weight | 48 lbs 49 lbs 50 lbs |
| Height | 36" |
| Length with Riggings | 42" |
| Product Weight with 16 Seat | 40 lbs |
| Product Weight with 20 Seat | 42 lbs |
| Product Weight with 18 Seat | 41 lbs |
| Seat Depth | 16" |
| Seat To Floor Height | 17.5" - 19.5" |

| SPECIFICATIONS | Description |
|---------------------------|----------------------------------------------|
| Warranty | Limited 3 Years |
| Weight Limit with 16 Seat | 250 lbs |
| Weight Limit with 18 Seat | 300 lbs |
| Weight Limit with 20 Seat | 350 lbs |
| Width Closed | 12.5" |
| Width Open | 24" 26" 28" |
| ACCESSORIES | Description |
| STDSSSP-AA | Amputee Adapter Kit, SSP, 1/set, EA |
| STDS831 | Heel Loops, 1pr, BX |
| STDS1034 | Wheelchair Cane/Crutch Holder,1/ea, EA |
| WASR | Limb Support, Right,1/cs, CS |
| WASL | Limb Support,Left,1/cs, CS |
| STDS801GT | WheelLockExtension,ViperGT,SSP2,1/ea, EA |
| STDS806 | Anti-Fold/Theft Device for w/c,1/ea, BX |
| STDS820 | Telescoping IV Pole,W/C, 1/bx, BX |
| STDS851 | Seat Belt, Velcro Close,1/ea, EA |
| STDS855 | Seat Belt,60"" Auto-type,1/ea, EA |
| STDS856 | Seat Belt,60"Velcro-type,1/ea, EA |
| STDS850 | Seat Belt, Clasp Type,1/ea, EA |
| STDS818 | Anti-Tippers,rear,SentraRecliner,1pr/bx, BX |
| STDS833N | ar Anti Tipper w.wheels SSP&CS,1/pr, PR |
| STDSSSP2-PL | Pull-To-Lock Brake, SSP2, Left, 1/ea, EA |
| STDSSSP2-PR | Pull-To-Lock Brake, SSP2, Right, 1/ea, EA |
| STDS803 | Oxygen Tank Holdr for W/C,1/cs, CS |
| PARTS | Description |
| STDS8M462L | BrakeAsm.DetachableArmLt,SS2,1/ea, EA |
| STDS8M462R | BrakeAsm.DetachableArmRT,SS2,1/ea, EA |
| STDS3J4601 | Slide Tube w/bushing, SSP,1/ea, EA |
| STDS002601 | Bushing for SlideTube,Sen.EC,1/ea, EA |
| STDS1070 | Seat Rail Guide, Removable Arm, 1/ea, EA |
| STDS3J4503 | Arm Release Button,SlvrSprt.1/ea, EA |
| STDS8M4651 | ForkStemCap,SS2,BS,Cruiser,1/ea, EA |
| STDS004602 | Seat Rail Guide, Fixed Arm, 1/ea, EA |
| STDS3J4625 | RearAxleBoltFixArmChair.SS2,1/ea, EA |
| STDS8M4601 | ForkStemBearing,SSP2,Cruiser,1/ea, EA |
| STDS3J2431 | Caster Axle Bolt, Silver Sport 1, 1/ea, EA |
| STDS3J2432 | Caster with 8mm Bearings, 1/ea, EA |
| STDS3J2421 | HubCap,RearWheel,Cruiser3,SSP,BS,1/ea, EA |
| STDS001000 | Axle Cap 8mm, 1ea, EA |
| STDS3J2410R | Footplate&HeelLoop,Right,Cruiser,SSP,CS, EA |
| STDS3J2400 | Handrim,Cruiser3,1/ea, EA |
| STDS3J24SF | Footrest Set,Cruiser3,SSP, 1pr/set, EA |
| STDS3J2424 | Wheel24in Blk.Handrl,Cruiser3,SSP,BS,1/e, EA |
| LK3JELR | ELR Set,Black,1Pair eq EA, PR |
| STDSDSKVB | UniversalWheelChairVinylDeskArmPad,1/ea, EA |