

## Silver Sport 1 Wheelchair

HCPCS: K0001-1,K0001

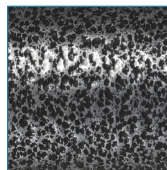


FIGURE A



FIGURE B



FIGURE C



FIGURE D



FIGURE E



FIGURE F

- Powder coated silver vein steel frame (Figure A)
- Padded armrests
- Nylon upholstery is durable, lightweight, attractive and easy-to-clean
- Urethane tires mounted on composite wheels provide durability and low maintenance
- Comes with push-to-lock wheel locks
- Carry pocket on backrest provides additional convenience
- Comes with swing-away footrests
- Folding back-canes for transport and storage
- Weight Capacity: 250 lbs

### PRODUCTS

### Description

SSP118FA-SF	SlvrSprt-1,18"SlvrVeinFxdArm,SwgFt,1/cs
-------------	-----------------------------------------

### SPECIFICATIONS

### Description

Back Height	16"
Carton Shipping Weight	42.8 lbs
Overall Height	30"   36"
Overall Length w/ Riggings	43.5"
Overall Width	24"   11"
Seat Dimensions	18" (W) x 15.75" (D)
Seat To Floor Height	19.5"
Warranty	Limited 3 Year
Weight	37.6 lbs
Weight Capacity	250 lbs

### ACCESSORIES

### Description

STDS831	Heel Loops, 1pr, BX
STDS1040S	Cup Holder, Swivel,1BX,6/CS, BX
STDS833N	ar Anti Tipper w.wheels SSP&CS,1/pr, PR
STDS6008-1	Carry Bag,W/C,Oxygen,1/ea, EA
LK3JELR	ELR Set,Black,1Pair eq EA, PR
STDS818	Anti-Tippers,rear,SentraRecliner,1pr/bx, BX
STDS850	Seat Belt, Clasp Type,1/ea, EA
STDS851	Seat Belt, Velcro Close,1/ea, EA
STDS855	Seat Belt,60"" Auto-type,1/ea, EA
STDS820	Telescoping IV Pole,W/C, 1/bx, BX

ACCESSORIES	Description
STDS856	Seat Belt,60"Velcro-type,1/ea, EA
STDS806	Anti-Fold/Theft Device for w/c,1/ea, BX
STDS834	OverheadAnti-Theft Bar,Single,1/ea, EA
STDS801GT	WheelLockExtension,ViperGT,SSP2,1/ea, EA
WASR	Limb Support, Right,1/cs, CS
WASL	Limb Support,Left,1/cs, CS
STDS1034	Wheelchair Cane/Crutch Holder,1/ea, EA
STDELR-AL	ArticulatingElev.Legrest, Std,1pr/cs, CS
STDSNUT	Tinnerman Nut,1pr/bx, EA
14300	16x17.5 Gen.use adj back cush 16-21in, EA
PARTS	Description
STDSFLNB	FullLengthNylonArmPad,1/ea, EA
STDS3J2418	Seat Uphol Nylon 18, SSP1,Cruiser,1/ea, EA
STDS3J2422	Frame Cap,Cruiser3,1/ea, EA
STDS2015	Upholstery Hardware, Set of 8, EA
STDS004609-9	Hand Rim Screw Set of 9,1Bag, BAG
STDS8M4603	BrakeTipSleeve,Cruiser,SSP, 1/ea, EA
WB 8036	Hand Grip, 1/ea, EA
STDS4S1503	Folding Hinge, TR39, 1/ea, EA
STDS4S4501	PushHandle,SilverSportW/FoldDownBack,1e, EA
STDS4S4502L	Brake,Left,SilverSportW/FoldDownBack,1e, EA
STDS4S4502R	Brake,Rght,SilverSportW/FoldDownBack,1e, EA
STDS4S4505L	SideFrame,Lft,SlverSprtW/FoldDownBack,1, EA
STDS4S4505R	SideFrame,Rgt,SlverSprtW/FoldDownBack,1, EA
STDS4S1069	HangerPins,CS/SilverSport/Cruiser, 4/pkg, PKG
STDS001000	Axle Cap 8mm, 1ea, EA
STDS3J24SF	Footrest Set,Cruiser3,SSP, 1pr/set, EA
STDS3J2421	HubCap,RearWheel,Cruiser3,SSP,BS,1/ea, EA
STDS3J2400	Handrim,Cruiser3,1/ea, EA
STDS3J2413	Rear Axle Bearing,Cruiser3,1/ea, EA
STDS3J2431	Caster Axle Bolt, Silver Sport 1, 1/ea, EA