

## Combination Transfer Bench/Commode

HCPCS: E0247



FIGURE A



FIGURE B

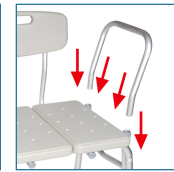


FIGURE C

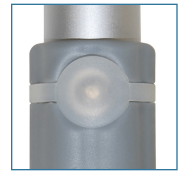


FIGURE D

- Tool-free assembly of back, legs and arm (Figure A - C)
- Combines transfer bench and commode into one
- Durable blow-molded plastic bench and backrest
- Aluminum A-frame construction is lightweight and provides additional stability
- Height adjusts in ½" increments with unique "Dual Column" extension legs
- No exposed hardware to injure patient
- Extra-large suction cups provide added safety
- New pinch-free cover allows for push pins to be depressed without pinching fingers (Figure D)

PRODUCTS	Description
12011KDC-1	Tranf Bnch w/Commode, 3pc,1/cs

SPECIFICATIONS	Description
Carton Shipping Weight	13 lbs.   24 lbs.
Outside Legs	31.5" (W) x 22.25" (D)
Seat Dimensions	26.25" (W) x 16.25" (D)
Seat Height	18" - 22"
Warranty	Limited Lifetime
Weight	11 lbs.
Weight Capacity	400 lbs

ACCESSORIES	Description
12011SL	SuctionCups,Lg.12011,1pr/bx, BX
12011SS	SuctionCups,Sm.12011,1pr/bx, BX